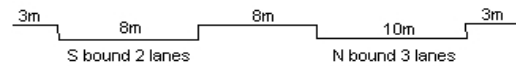
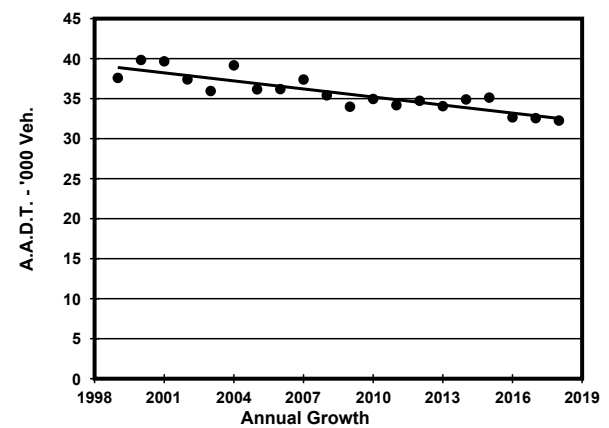
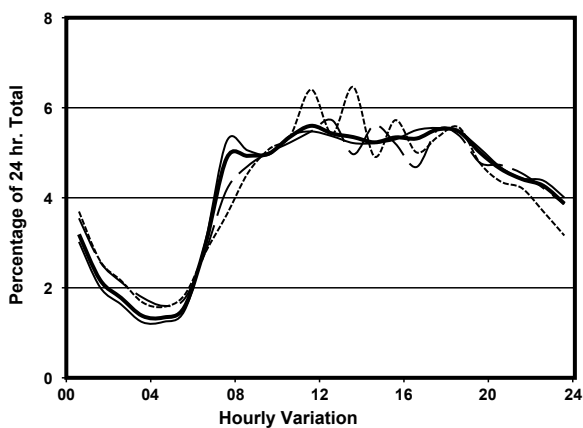
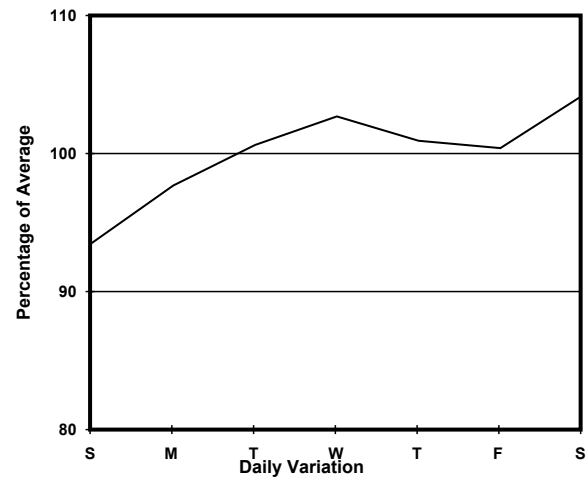
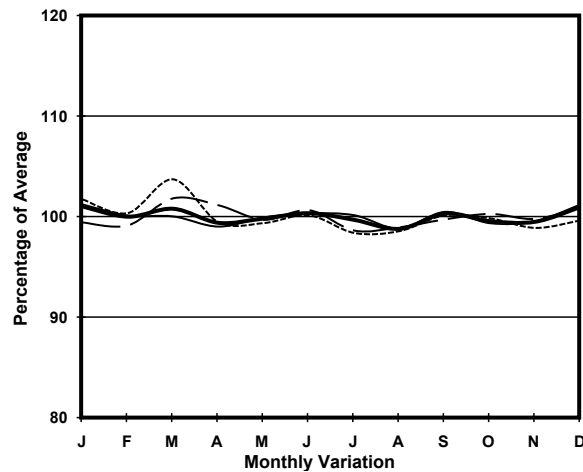


YEAR 2018
 COVERAGE (B) STATION 4212
 ROAD NETWORK MAJOR
 ROAD TYPE PRIMARY DISTRIBUTOR

LINK CHATHAM RD N & MA TAU WAI RD (from SAN LAU ST to CHI KIANG ST)



1. TRAFFIC FLOW VARIATION AND GROWTH



— All day — Mon.- Fri. Sat. - - - - Sun.

2. TRAFFIC CHARACTERISTICS (BY DIRECTION)

Parameter	All - Day	Mon. - Fri.	Sat.	Sun.
SOUTH BOUND				
A.A.D.T.	13520	13280	14890	13680
R 12 / 24 - %	61.5	61.9	59.9	61.4
R 16 / 24 - %	79.5	80	77.8	78.7
AM Peak Hour	0700-0800	0700-0800	0900-1000	0900-1000
One-way flow at AM peak hour	770	840	790	650
T - % (AM)	-	18.8	-	-
PM Peak Hour	1800-1900	1800-1900	1800-1900	1700-1800
One-way flow at PM peak hour	690	660	840	740
T - % (PM)	-	16.2	-	-
Prop.of commercial vehicles - 16 hr.	-	17.5	-	-
NORTH BOUND				
A.A.D.T.	18740	19240	18840	16590
R 12 / 24 - %	64.7	65	63.1	65.2
R 16 / 24 - %	83.3	83.9	81.6	82
AM Peak Hour	0900-1000	0900-1000	0900-1000	0900-1000
One-way flow at AM peak hour	950	980	900	890
T - % (AM)	-	19.2	-	-
PM Peak Hour	1700-1800	1600-1700	1700-1800	1800-1900
One-way flow at PM peak hour	1100	1150	1130	960
T - % (PM)	-	18.3	-	-
Prop.of commercial vehicles - 16 hr.	-	18.6	-	-

3. OTHER INFORMATION AND COMMENT

4. Vehicle classification and occupancy - Monday to Friday

Time		Class of vehicle									
		Motor Cycle	Private Car	Taxi	Private LB	PLB	Goods veh.		Non Fr. Bus	Fr. Bus	
							Light	M & H		SD	DD
0700-0800	Pro	5.6	20.2	23.5	2.6	9.5	14.4	1.0	8.8	0.0	14.4
	Ocp	1.0	1.4	2.0	7.9	10.3	1.5	1.3	12.9	0.0	38.7
0800-0900	Pro	7.8	36.3	15.4	0.9	8.5	12.0	0.5	7.1	0.0	11.5
	Ocp	1.1	1.3	1.9	4.0	8.1	1.7	1.0	17.6	0.0	41.6
0900-1000	Pro	3.6	28.9	23.5	0.9	4.5	20.2	1.8	5.1	0.0	11.6
	Ocp	1.2	1.5	1.7	2.7	9.1	1.6	1.8	17.9	0.0	27.4
1000-1100	Pro	4.0	22.2	19.8	0.9	7.1	27.2	2.8	3.7	0.0	12.3
	Ocp	1.1	1.4	1.7	1.7	7.8	1.4	1.1	16.8	0.0	25.5
1100-1200	Pro	2.6	29.1	27.3	0.5	5.7	20.8	1.3	3.9	0.0	8.8
	Ocp	1.0	1.4	1.7	4.5	5.1	1.4	1.8	15.0	0.0	28.1
1200-1300	Pro	2.2	31.2	23.1	0.5	4.3	20.1	2.4	5.7	0.0	10.4
	Ocp	1.0	1.5	1.6	1.0	7.9	1.4	1.6	21.0	0.0	24.7
1300-1400	Pro	3.2	29.4	20.8	2.0	5.5	21.6	2.6	3.5	0.0	11.5
	Ocp	1.0	1.4	1.7	3.3	8.5	1.6	1.2	16.7	0.0	25.3
1400-1500	Pro	2.9	32.7	21.1	1.2	4.3	18.5	2.6	5.2	0.0	11.4
	Ocp	1.2	1.6	1.7	2.8	10.7	1.4	1.8	17.9	0.0	22.9
1500-1600	Pro	1.5	38.5	15.3	1.5	2.6	23.7	2.0	4.3	0.0	10.4
	Ocp	1.0	1.4	1.9	7.5	7.2	1.3	1.3	13.9	0.0	27.3
1600-1700	Pro	3.8	30.3	22.8	1.6	3.2	18.3	2.1	5.9	0.0	11.9
	Ocp	1.1	1.4	1.8	1.7	9.9	1.6	1.5	21.0	0.0	30.9
1700-1800 Peak hour	Pro	5.1	36.1	18.4	3.2	5.1	14.4	0.3	4.5	0.1	12.8
	Ocp	1.0	1.3	2.0	4.3	11.3	1.5	1.0	16.2	1.0	33.5
1800-1900	Pro	3.9	36.2	17.5	0.0	6.8	17.7	0.5	5.0	0.0	12.4
	Ocp	1.1	1.4	2.1	0.0	12.2	1.6	1.0	27.6	0.0	48.7
1900-2000	Pro	5.4	40.0	22.8	0.5	4.6	8.2	0.5	4.9	0.0	13.0
	Ocp	1.1	1.4	2.1	4.0	10.7	1.3	1.0	26.6	0.0	34.8
2000-2100	Pro	2.5	36.3	26.8	0.0	6.6	9.2	0.3	4.7	0.0	13.5
	Ocp	1.0	1.5	2.0	0.0	7.7	1.3	4.0	22.1	0.0	28.7
2100-2200	Pro	3.6	33.5	33.1	0.0	6.9	6.6	1.0	3.0	0.0	12.4
	Ocp	1.2	1.5	2.1	0.0	9.0	1.4	1.7	5.2	0.0	31.4
2200-2300	Pro	5.1	31.0	37.9	0.0	7.3	3.6	0.4	1.5	0.0	13.2
	Ocp	1.1	1.4	2.0	0.0	9.4	1.2	1.0	1.0	0.0	29.3
16 hours	Pro	3.9	32.3	22.6	1.0	5.7	16.3	1.4	4.9	0.1	11.9
	Ocp	1.1	1.4	1.9	4.3	9.1	1.5	1.5	18.1	1.0	31.7

Legend

Pro. Proportion of vehicles in % (Sum may not add up to 100% due to figure rounding)*

Ocp. Average occupancy of vehicles including both driver and passengers*

M&H Medium and Heavy

***** All traffic data are collected from combined bounds except for one way traffic